

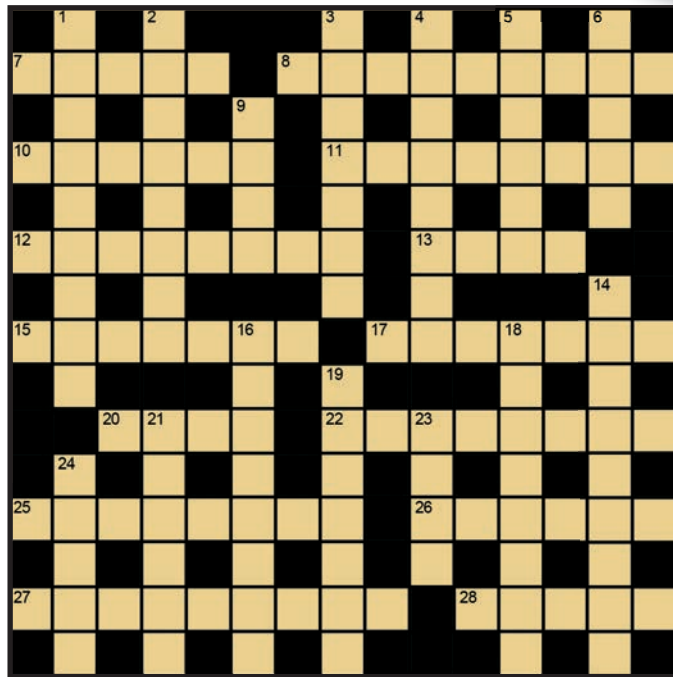


## At the back Puzzles

# iQ

### ARE YOU A MATHS & LOGIC MAESTRO?

If you have a mind for maths, logical reasoning, cryptic clues and other conundrums, send them to us and we will publish the most difficult in these very pages. If you are interested, contact [social@theactuary.com](mailto:social@theactuary.com)



## That's our business Member puzzle 22

Courtesy of Aktoro

### Across

- 7 Test or get a move on (5)
- 8 He'll get you a ticket and come together with 96 more (9)
- 10 Curie given Nobel – it's capital for fighting man (6)
- 11 Number test – it's missing a British tourist (8)
- 12 Chopped head of raptor from kestrel – no broken bones! (8)
- 13 E...e....e (4)
- 15/27 Officer in frightful UN scare has 8 types of this here (7,9)
- 17 Patron father adopts 6 after showing the way (2,5)
- 20 Income's really warming up (4)
- 22 Ends like less able ship (8)
- 25 Move right as air does when cursed (4,4)
- 26 Circle give opinion about some books (6)
- 27 See 15
- 28 Bill's not in to give an opinion (5)

### Down

- 1 Disappear with the lead (2,7)
- 2 Sounds like promising child makes London drink (5,3)
- 3 What's inside Europe is not at home! (7)
- 4 It wasn't meant to be – I'd been buried in grave (8)
- 5 Heat all around top slice of loaf to hot – it's toasted (6)
- 6 Encourage, for example, and try till education's finished (3,2)
- 9 Words start with new replacement – this is what follows (4)
- 14 One item of clothing covered in hair that gives farmer his income (9)
- 16 Flea discovered in the Spring perhaps (1,3,4)
- 18 Part of the travel industry arranged vacation that included one when not cold (8)
- 19 Rewritten sentences omit some of the Bible – it's natural (7)
- 21 Admits to have drink (4,2)
- 23 Leafage finally follows tree shoot (4)
- 24 Elaborate reversal of directions is strange (5)



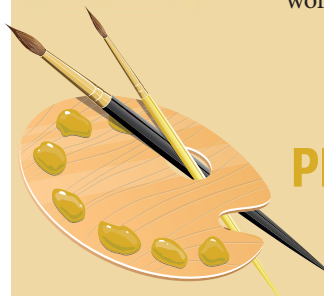
**Mensa**  
The High IQ Society

## Colour change Mensa puzzle 831

Rearrange the letters of these words to give four colours.

What are they?

**YAWN**  
**PROVOKING**  
**BANNER**



## Raffle baffle Mensa puzzle 832

In a raffle Ian had ticket number 1, Vivien had number 12 and David had number 1006. Who had the following tickets 500, 60, 1000 and 151 from Axel, Charlie, Brenda and Norman?

